



**LOGIS**  
PLANNING FOR EFFICIENCY

## CORPORATE PROFILE

LOGIS is a supplier of New Generation Advanced Planning and Scheduling solutions for Metals and Discrete Manufacturing industries with focus on demanding planning environments (Steel and Aluminium) with the following characteristics of their production environments:

- High complexity and scope
- High uniqueness
- High sensitivity to changes
- Limited predictability

Improvements in the following areas are typical results of our projects with a direct and significant effect on corporate competitiveness regardless the state of the economic cycle:

### Customer Delivery Performance

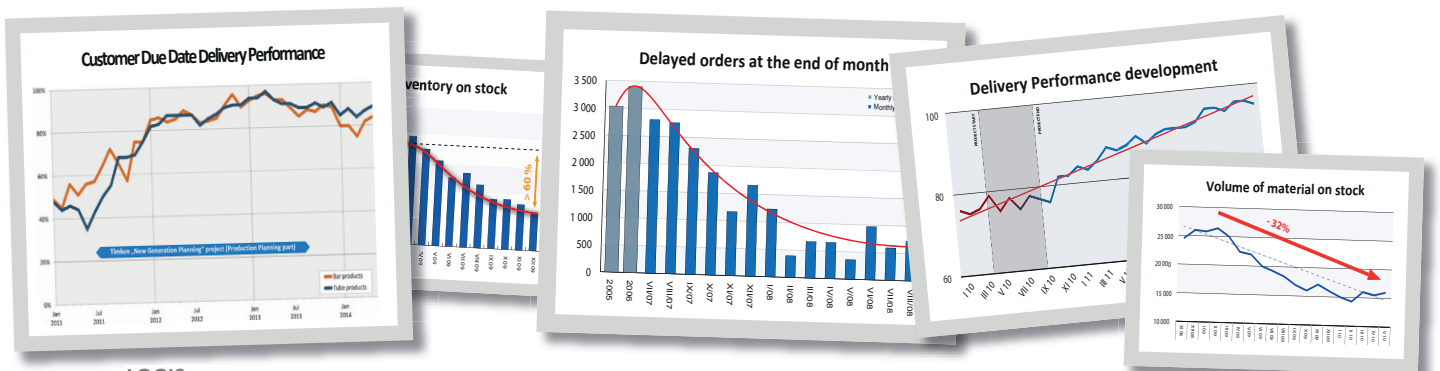
- Improved Due Date Performance
- Reduced Delivery Lead Times
- Increased Flexibility
- Improved Information Service

### Operational Excellence

- Increased Throughput
- Increased Inventory Turns
- Specific Economic Effects
- Improved Visibility

### KEY FACTS

- More than 70 customers worldwide (EU, USA, Japan, Russia): ArcelorMittal, Nippon Steel & Sumitomo Metal Corporation, JFE Steel, TimkenSteel, Trinecke Zelezarny, VSMPO-Avisma, ...
- Unique ability to satisfy the requirements even of the most Demanding Planning Environments of metals business
- Highly efficient technologies and experts
- Full integrability with enterprise IT ecosystem (ERP, WMS, MES, etc.)
- Most flexible production planning solution currently on the market
- Outstanding improvements of KPIs as usual results, not incidental events
- Ability to adapt to any local language and time zone



LOGIS a.s.

U Noveho sveta 286  
74401 Frenstat p. R., Czech Republic  
[www.logis.cz](http://www.logis.cz), [info@logis.cz](mailto:info@logis.cz)